

C911-SA (2-Channels) FFT Data Collector, Signal Analyzer with Bearing Condition & Balancing + Laser Alignment



SAVE TIME AND MONEY WITH 3 IN 1 !

C911-SA - a simple compact, reliable and affordable system for all rotating equipment. It offers the benefits of data collection, signal analysis, balancing and dynamic precision laser shaft alignment on machinery with minimal waste of time and without stretching the budget.

Proper alignment eliminates the leading cause of machine breakdown and pays for itself! Diminishes the cost of spare parts and production lost due to downtime!

SA model makes quick, accurate shaft alignment a simple task for all new alignment users! The system is designed of easy in use and user-friendly interface!



ADDITIONAL ALIGNMENT PROGRAMS AND USEFUL FUNCTIONS

HORIZONTAL-

For the alignment of horizontal machines train by any position of 9,12,3 or 6'clock, or reduce angle mode at min. 60° .

VERTICAL-

For the alignment of vertical and flange-mounted machines by any position of 9,12,3 or 6'clock.

SOFT FOOT-

To check that the machine is properly standing on all feet and remove "soft-foot" step by step if occur.

THERMAL GROWTH-

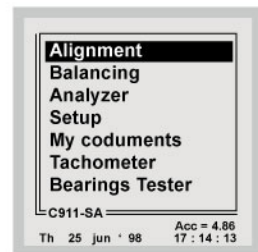
Input of cold coupling target for the thermal alignment compensation, considering difference in thermal growth between machines.

ALIGNMENT SHIM SIMULATOR-

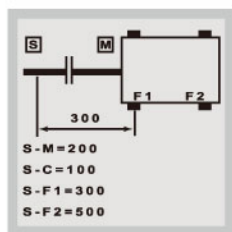
Shims simulation function that allows to check the possibility of use of the present shims in case they differ from the results of the calculations.

MY DOCUMENTS-

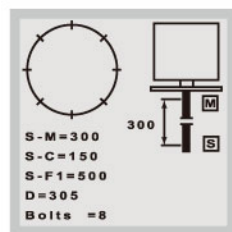
Versatile PC compatible file system (FAT) ► allows to organize data file management and report print. Expanable memory of 1GB in "B" drive.



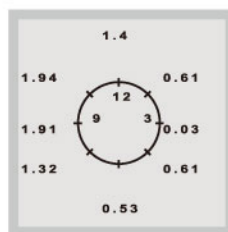
HORIZONTAL ALIGNMENT



VERTICAL ALIGNMENT



THERMAL GROWTH



Thermal growth	
Horizontal	S M
1:	→ 0.1
2:	↘ 0.05
Vertical	
3:	→ 0.25
4:	↘ 0.03

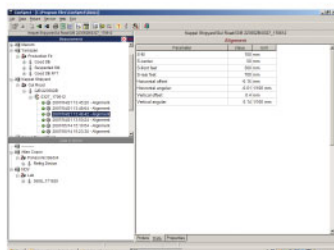
DYNAMIC ICON

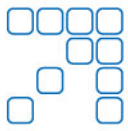
:Horizontal		LIVE
S M	-0.22 mm	
↘	-1.49/100 mm	
F1	-2.76 mm	
F2	-5.75 mm	
		271.7°
: Vertical		
S M	-0.06 mm	
↘	0.99/100 mm	
F1	2.06 mm	
F2	4.05 mm	



MY DOCUMENTS

Versatile PC compatible file system (FAT) - and Windows base "Conspect" software - allow more than 500 date save within device and upload to PC via USB communication for report print and PC alignment database management.





C911-SA (2-Channels) FFT Data Collector, Signal Analyzer with Bearing Condition & Balancing + Laser Alignment



TECHNICAL SPECIFICATIONS

Measuring Transducer units (S, M)

Housing material	Light weight alloy aluminum
Environmental protection	IP65 (water spray resistant, shock and dustproof)
Operating temperature	-20°C to 50°C
Laser	Class II, Diode laser
Laser wavelength	635-670nm, visible red light
Laser safety	Do not look direct into beam.
Resolution	0.001mm
Detectors	10x10mm PSD
Electronic inclinometer	0.1° resolution
Dimensions	Approx. 64x58x45mm
Measurement distance	up to 5m
Weight	(M) 255g (S) 235g

Control Display unit

Housing	Light weight alloy aluminum
Environmental Protection	IP65 (water spray resistant, shock and dustproof)
Operating temperature	0°C to 55°C
Type of display	Backlit dot matrix LCD
Display size	61x61mm
Max. displayed error	+1% +1digit
Displayed resolution	0.01mm, 0.001mm
Rechargeable battery	4 x 1.2V NiMH
Output interface	High speed USB port
Keyboard	Membrane alphanumeric 17 key
Memory capacity	2MB
Dimensions	Approx. 170x110x40mm
Weight	600g

Carrying Case

Standard	ABS with form inserted
Package weight & dimensions	Approx. 456 x 355 x 133mm
Weight incl. all std parts	7.3Kgs (SA model)

Standard Delivery:

Extra components for SA mode.

Optional C911-SA add-on Laser Alignment Components

- S, M Laser Transducer units
- Transducer cable, 2pcs
- Compact Chain Bracket frame, 2pcs
- Compact Chain, 200mm & 300mm, 2pcs each
- Support Posts 150mm & 300mm, 4pcs each
- Calibration & Quality certificate
- ABS carrying case (2) w/ form inserted



Options:

- Compact magnetic bracket
- Bolt hole bracket
- Offset adaptor
- Stainless steel precut shims package



METZ™ Pre-cut Shims

304 Stainless steel ABCD sizes complete with case package

Representative:

