

CONNECTING CoCo-80X TO EDM SOFTWARE

Purpose	Comprehensive guide on how to connect CoCo-80X to EDM software.
Document ID	SPT-CO-G-002
OS	Windows 7 or newer
Version	All EDM 6.0 or newer, all CoCo-80X versions

THERE ARE 5 WAYS TO CONNECT CoCo-80X TO EDM SOFTWARE:

1. Ethernet One-to-One, with DHCP – [if using Remote Display, DHCP software is required]
2. Ethernet One-to-One, Static IP
3. Ethernet LAN, with DHCP
4. Ethernet LAN, Static IP
5. Wi-Fi

[NOTICE]

The CoCo-80X cannot connect to EDM via USB, because the CoCo-80X’s USB connection is no longer network-based. The CoCo-80 used a network-based connection on the USB, but the CoCo-80X’s USB connection is not network-based. EDM can only establish connection via network-based connections. The CoCo-80X’s USB connection behaves like an external storage device. Although files can still be transferred this way, it provides limited functionality compared with network-based connections. Therefore, we do not recommend using this connection method for general purposes.

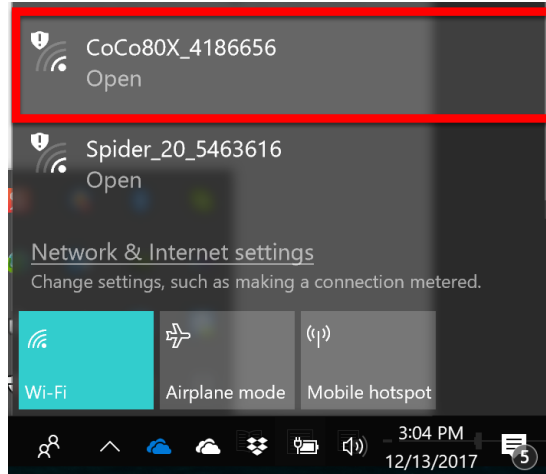
USB connection is considered a backup method should user does not have access to any network-based connection.

STEP 1: ESTABLISH PHYSICAL CONNECTION

Choose Wi-Fi, Ethernet One-to-One, or Ethernet LAN

1A. Wi-Fi

- On the CoCo-80X **Setup** Screen, go to **Connections**, and press **Enable Wi-Fi (F2)**
- On the PC, go to Wi-Fi connections, and click on your CoCo-80X. *(The network of CoCo-80X will be named as CoCo80X_xxxxxxx with xxxxxx is the serial number of the designated unit)*



1B. ETHERNET ONE-TO-ONE

- Connect the CoCo-80X to the PC via an ethernet cable
- Set IP address settings of both devices to either **Static IP** or **DHCP**

1C. ETHERNET LAN

- Connect both the PC and the CoCo-80X to the same Local Area Network (LAN)
- Set IP address settings of both devices to either **Static IP** or **DHCP**

STEP 2: CONFIGURE IP ADDRESS

When connecting via ethernet, there are two methods for handling the IP addresses: **Static IP** and **DHCP**. In the case of Static IP, the first 3 values of the IP address must be the same. The last digit must be different.

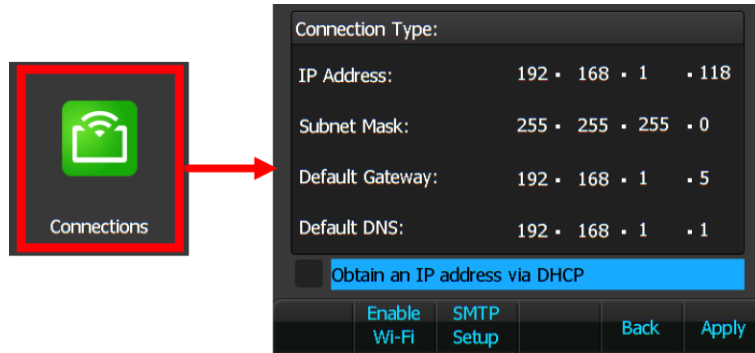
2A. WI-FI

- No IP address settings for Wi-Fi connections

2B. STATIC IP ADDRESS

Configure CoCo IP Address

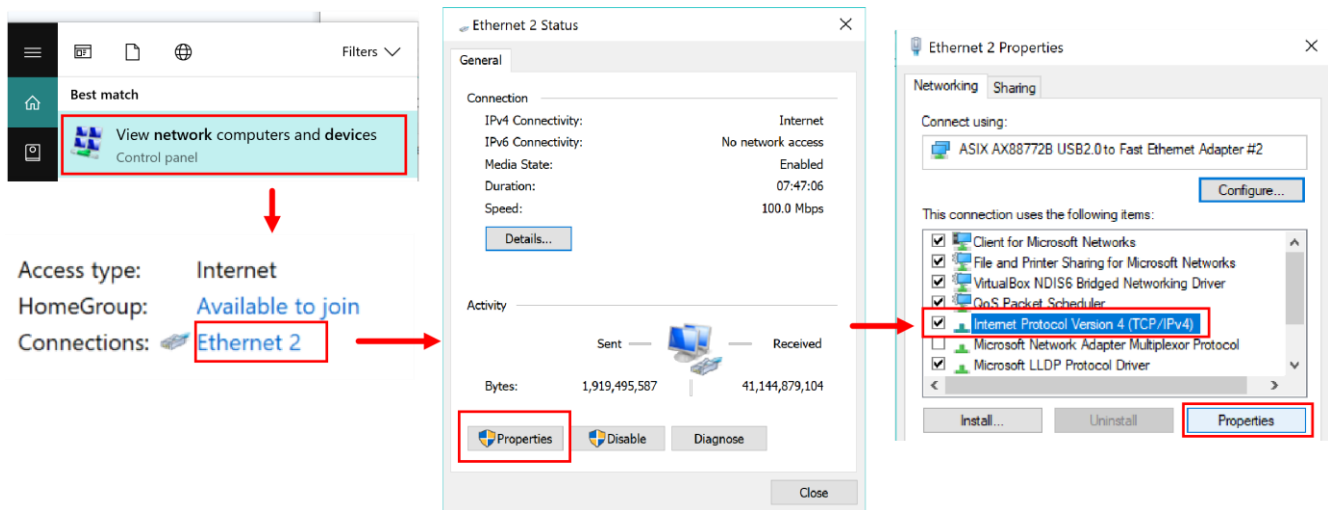
- On the CoCo-80X Setup Screen, go to **Connections**
- **Disable the DHCP checkbox**
- **Enter fixed IP address for CoCo**
 - The first 3 digits of the IP address must be the same. For example, if we choose the CoCo IP address as 192.168.22.130, then the PC IP address must be 192.168.22.xx (where 'xx' can be any number other than 130)
 - Subnet mask, Gateway, and Default DNS should be the same – Both the CoCo and PC must have the same values for these, on all 4 digits



- Press **Apply**

Configure PC IP address

- On your PC, navigate to the **Network and Sharing Center TCP/IPv4 Properties**
 - On Win7, go to Control Panel > Network and Sharing Center > Ethernet > Properties > TCP/IPv4
 - On Win10
 - go to **Local Area Connection Properties**
- **Enter fixed IP address for PC**
 - The computer and CoCo should have the same subnet mask, gateway, and DNS -- but different IP addresses



2C. DHCP

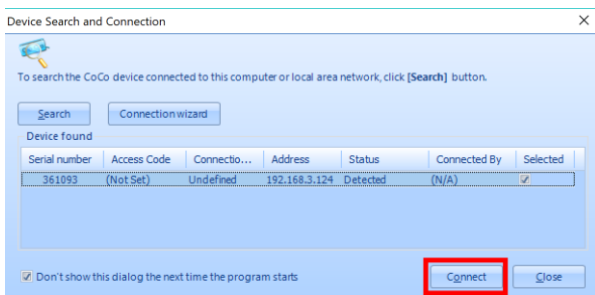
- On the CoCo-80X Setup Screen, go to **Connections**, and select the box for **Obtain an IP address via DHCP**
- On your PC, go to **Connections**, and select the box for **Obtain an IP address via DHCP**

STEP 3: CONNECTING TO EDM

- Start up **EDM CoCo Mode (DSA or VDC)**
- Press the **Search** button in the middle of the screen



- Press the **Connect** button



- Now it should be connected to EDM